



**India Meteorological Department  
(Ministry of Earth Sciences)**

**NATIONAL BULLETIN NO. 1 (BOB/01/2024)**

**TIME OF ISSUE: 0915 HOURS IST** **DATED: 24.05.2024**  
**FROM: INDIA METEOROLOGICAL DEPARTMENT (FAX NO. 24643965/24699216/24623220)**

**TO: CONTROL ROOM, NDM, MINISTRY OF HOME AFFAIRS (FAX.NO. 23093750)**  
**CONTROL ROOM NDMA (FAX.NO. 26701729)**  
**CABINET SECRETARIAT (FAX.NO.23012284, 23018638)**  
**PS TO HON'BLE MINISTER FOR S & T AND EARTH SCIENCES (FAX NO.23316745)**  
**SECRETARY, MOES (FAX NO. 24629777)**  
**H.Q. (INTEGRATED DEFENCE STAFF AND CDS) (FAX NO. 23005137/23005147)**  
**DIRECTOR GENERAL, DOORDARSHAN (23385843)**  
**DIRECTOR GENERAL, AIR (23421105, 23421219)**  
**PIB MOES (FAX NO. 23389042)**  
**UNI (FAX NO. 23355841)**  
**D.G. NATIONAL DISASTER RESPONSE FORCE (NDRF) (FAX NO. 26105912, 2436 3260)**  
**DIRECTOR, PUNCTUALITY, INDIAN RAILWAYS (FAX NO. 23388503)**  
**CHIEF SECRETARY, ANDAMAN & NICOBAR ISLANDS (FAX NO. 03192- 232656)**  
**CHIEF SECRETARY, GOVT. WEST BENGAL (FAX NO. 033-22144328)**  
**CHIEF SECRETARY, GOVT. OF ODISHA (FAX NO. 0674 -2536660)**  
**CHIEF SECRETARY, GOVT. OF ANDHRA PRADESH (FAX NO. 0863-2441029, 08645-246600)**  
**CHIEF SECRETARY, GOVT. OF TAMIL NADU (FAX NO. 044-25672304)**  
**CHIEF SECRETARY, GOVT. OF PUDUCHERRY (FAX NO. 0413-2337575, 2334145)**

**Sub: Depression formed over central Bay of Bengal (Pre-Cyclone Watch for West Bengal Coast)**

The well-marked low pressure area over westcentral & adjoining south Bay of Bengal moved northeastwards during past 12 hours, concentrated into a depression and lay centered at 0530 hrs IST of today, the 24<sup>th</sup> May, 2024 over central Bay of Bengal near latitude 15.0 degree N and longitude 88.4 degree E, about 800 km south-southwest of Khepupara (Bangladesh) and 810 km south of Canning (West Bengal).

It is very likely to continue to move northeastwards and intensify further into a cyclonic storm over eastcentral Bay of Bengal by 25<sup>th</sup> May morning. Subsequently, it would move nearly northwards, intensify into a severe cyclonic storm by 25<sup>th</sup> night. Continuing to move nearly northward, it is very likely to cross Bangladesh and adjoining West Bengal coasts between Sagar Island and Khepupara around 26<sup>th</sup> May midnight as a severe cyclonic storm.

Forecast track and intensity are given in the following table:

<b>Date/Time (IST)</b>	<b>Position (Lat. °N/ long. °E)</b>	<b>Maximum sustained surface wind speed (Kmph)</b>	<b>Category of cyclonic disturbance</b>
24.05.24/0530	15.0/88.4	40-50 gusting to 60	Depression
24.05.24/1730	15.9/89.2	50-60 gusting 70	Deep Depression
25.05.24/0530	17.1/89.5	60-70 gusting to 80	Cyclonic Storm
25.05.24/1730	18.0/89.7	80-90 gusting to 100	Cyclonic Storm
26.05.24/0530	19.3/89.8	100-110 gusting to 120	Severe Cyclonic Storm
26.05.24/1730	20.9/89.6	110-120 gusting to 130	Severe Cyclonic Storm
27.05.24/0530	21.9/89.4	110-120 gusting to 135	Severe Cyclonic Storm
27.05.24/1730	23.1/89.5	70-80 gusting to 90	Cyclonic Storm
28.05.24/0530	23.9/89.8	40-50 gusting to 60	Depression

## **Warnings (Graphics Attached):**

### **Heavy Rainfall Warning:**

- (a) Light to moderate rainfall at most places with heavy to very heavy rainfall at isolated places is likely over coastal districts of West Bengal and adjoining districts of North Odisha on 26<sup>th</sup> & 27<sup>th</sup> May and isolated extremely heavy rainfall likely over coastal districts of West Bengal on 26<sup>th</sup> May.
- (b) Light to moderate rainfall at most places with heavy to very heavy rainfall at isolated places is likely over Mizoram, Tripura and South Manipur on 26<sup>th</sup> and over Assam & Meghalaya, Arunachal Pradesh, Nagaland, Mizoram, Manipur & Tripura on 27<sup>th</sup> & 28<sup>th</sup> May.  
Isolated extremely heavy rainfall is likely over Assam & Meghalaya on 27<sup>th</sup> & 28<sup>th</sup> May, Arunachal Pradesh on 28<sup>th</sup> May and Mizoram & Tripura on 27<sup>th</sup> May.
- (c) Light to moderate rainfall at most places with heavy to very heavy rainfall at isolated places are likely over Andaman Islands on 24<sup>th</sup> May.

### **Wind Warning:**

- ❖ Squally wind speed reaching 40-50 kmph gusting to 60 kmph is likely to prevail over central and adjoining South Bay of Bengal on 24<sup>th</sup> May. It would become 50-60 kmph gusting to 70 kmph over central Bay of Bengal on 24<sup>th</sup> May evening.
- ❖ It would extend to adjoining areas of North Bay of Bengal with gale wind speed reaching 60-70 kmph gusting to 80 kmph from 25<sup>th</sup> May morning. It would further increase becoming 100-110 kmph gusting to 120 kmph over North Bay of Bengal from morning and 110-120 kmph gusting to 120 kmph from evening of 26<sup>th</sup> May. Gale wind speed reaching 70-80 kmph gusting to 90 kmph is likely over adjoining central Bay of Bengal from 26<sup>th</sup> morning for subsequent 24 hours.
- ❖ Squally wind speed reaching 40-50 kmph gusting to 60 kmph is likely along & off Bangladesh, West Bengal and adjoining North Odisha coasts from 25<sup>th</sup> May evening. It is likely to increase becoming gale wind speed reaching 60-70 kmph gusting to 80 kmph from morning of 26<sup>th</sup> May and 100-120 kmph gusting to 135 kmph along & off Bangladesh and adjoining West Bengal coasts from evening of 26<sup>th</sup> evening for subsequent 12 hours.
- ❖ Squally wind speed reaching 40-50 kmph gusting to 60 kmph is likely over Andaman Islands and North Andaman Sea on 24<sup>th</sup> May.

### **Sea condition:**

- ❖ Rough to very rough sea condition is likely over central and adjoining south Bay of Bengal on 24<sup>th</sup> May. It would become high over central Bay of Bengal on 25<sup>th</sup> May & 26<sup>th</sup> May and High to Very High over North Bay of Bengal from 25<sup>th</sup> evening till 27<sup>th</sup> May morning.
- ❖ Rough to very rough sea condition is likely along & off Bangladesh, West Bengal and adjoining North Odisha coasts from 25<sup>th</sup> May evening and high to very high along & off Bangladesh and West Bengal coasts from 26<sup>th</sup> morning onwards till 27<sup>th</sup> May morning.
- ❖ Rough to very rough sea condition is likely over Andaman Islands and North Andaman Sea on 24<sup>th</sup> May.

### **Fishermen Warning (graphics attached):**

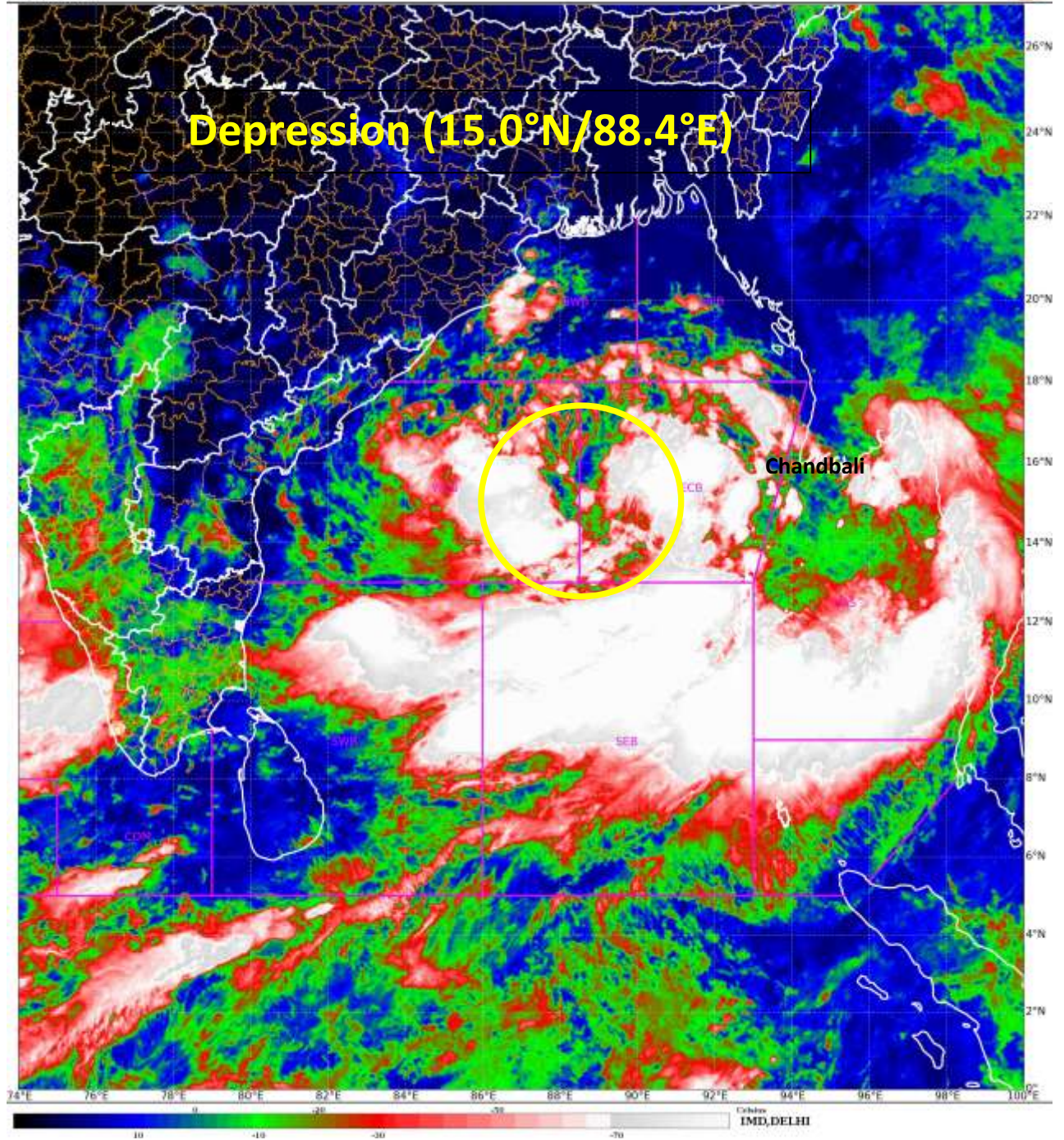
Fishermen are advised not to venture into south Bay of Bengal and Andaman Sea till 24<sup>th</sup> May, central Bay of Bengal till 26<sup>th</sup> May and North Bay of Bengal from 25<sup>th</sup> May till 27<sup>th</sup> May. Fishermen out at sea are advised to return to the coast.

**The system is under continuous surveillance and the next message will be issued at 1230 hours IST of tomorrow, the 24<sup>th</sup> May, 2024.**

**(Dr. Ananda Kumar Das)**

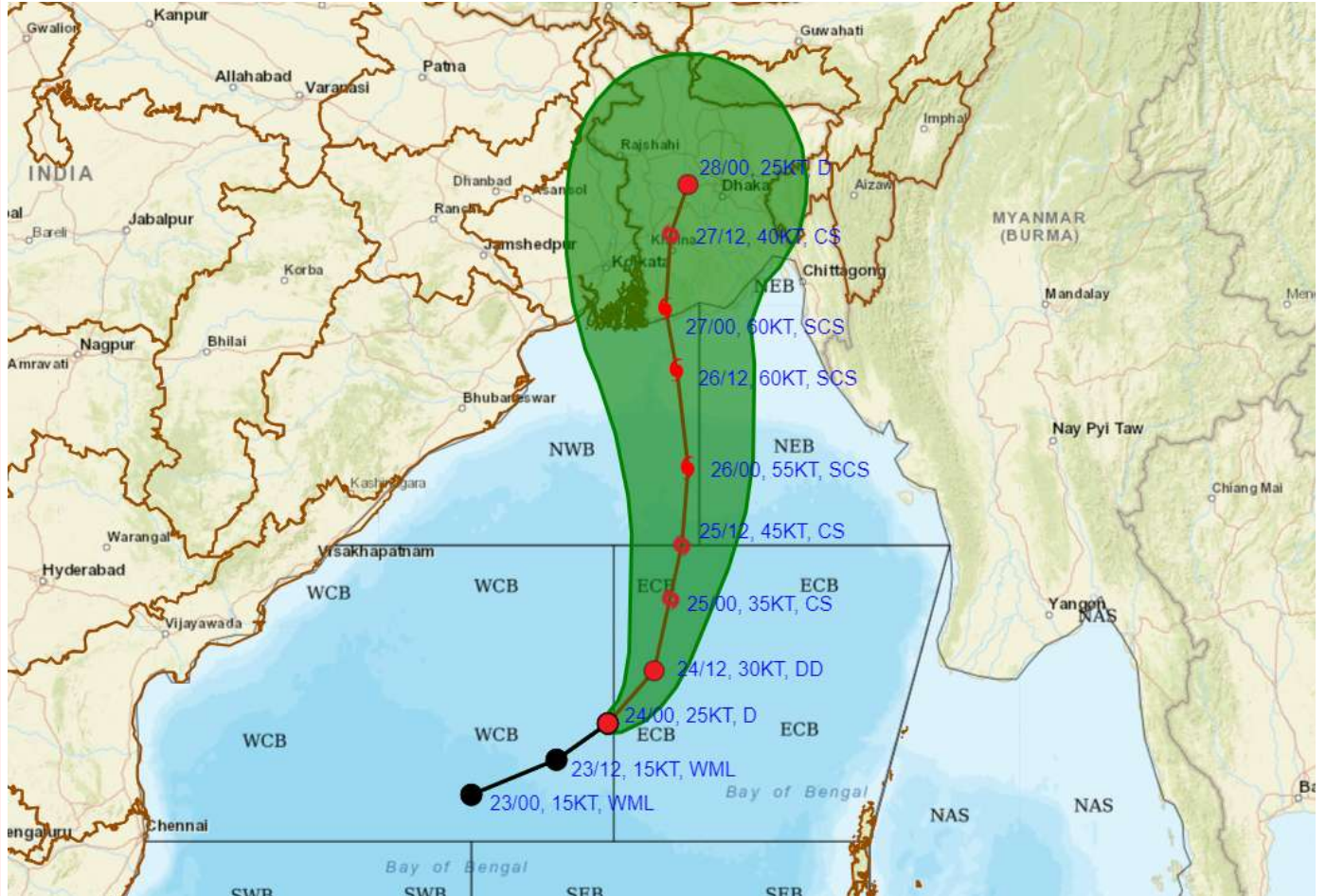
**Scientist F, Cyclone Warning Division, New Delhi**

*Copy to: ACWC Kolkata/ ACWC Chennai/ CWC Bhubaneswar/CWC Visakhapatnam/MO Port Blair*





**FORECAST TRACK ALONGWITH CONE OF UNCERTAINTY IN ASSOCIATION WITH DEPRESSION OVER CENTRAL BAY OF BENGAL BASED ON 0000 UTC (0530 IST) OF 24<sup>TH</sup> MAY 2024.**



DATE/TIME IN UTC

IST=UTC + 0530

L: LOW PRESSURE AREA

WML: WELL MARKED LOW PRESSURE AREA

D: DEPRESSION (17-27 KT)

DD: DEEP DEPRESSION (28-33 KT)

CS: CYCLONIC STORM (34-47 KT)

SCS: SEVERE CYCLONIC STORM (48-63KT)

VSCS: VERY SEVERE CYCLONIC STORM (64-89 KT)

ESCS: EXTREMELY SEVERE CYCLONIC STORM (90-119 KT)

SuCS: SUPER CYCLONIC STORM ( $\geq$  120 KT)

● LESS THAN 34 KT

○ 34-47 KT

○  $\geq$  48 KT

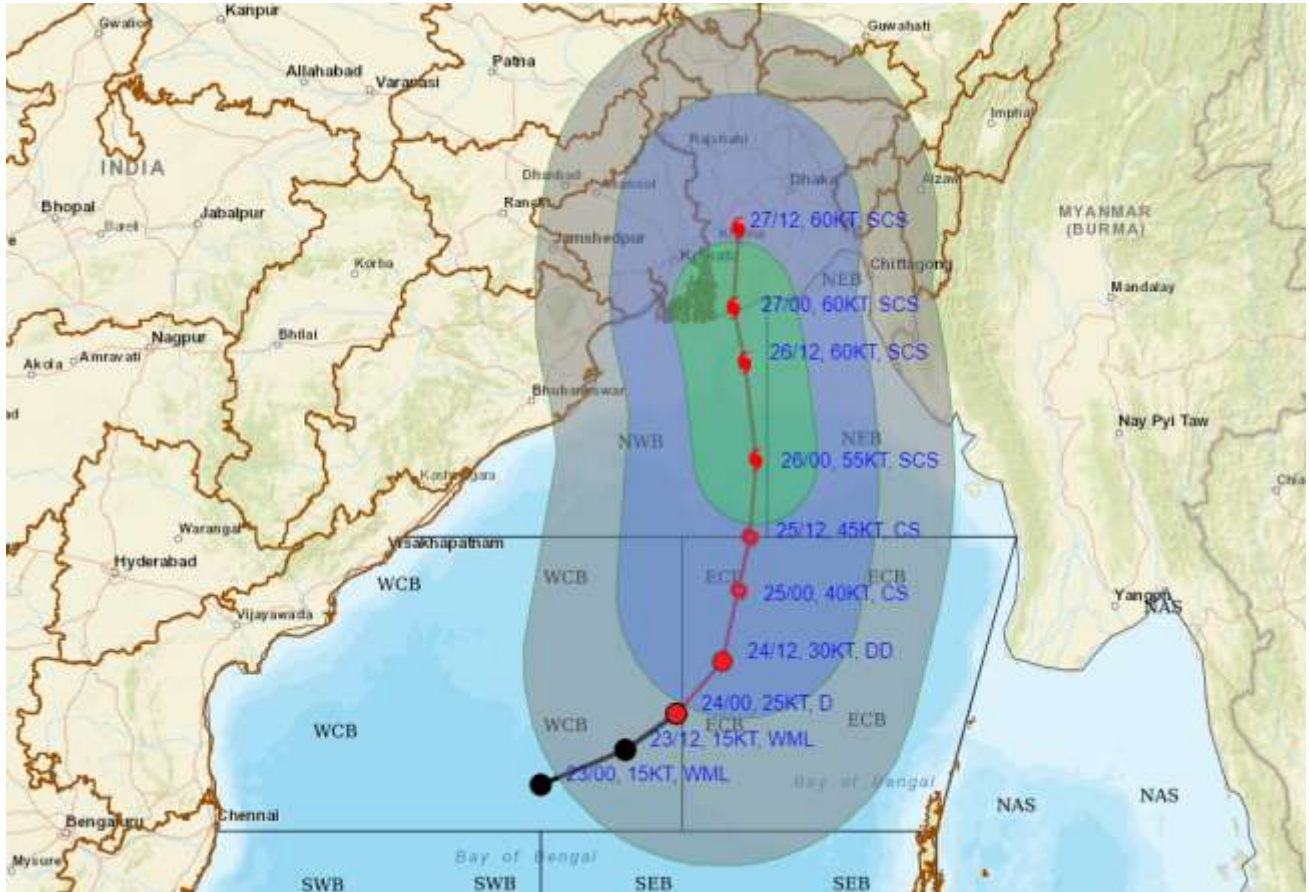
— OBSERVED TRACK

— FORECAST TRACK

▲ CONE OF UNCERTAINTY



**FORECAST TRACK ALONGWITH QUADRANT WIND DISTRIBUTION IN ASSOCIATION WITH DEPRESSION OVER CENTRAL BAY OF BENGAL BASED ON 0000 UTC (0530 IST) OF 24<sup>TH</sup> MAY 2024.**



**DATE/TIME IN UTC**

IST=UTC + 0530

L: LOW PRESSURE AREA

WML: WELL MARKED LOW PRESSURE AREA

D: DEPRESSION (17-27 KT)

DD: DEEP DEPRESSION (28-33 KT)

CS: CYCLONIC STORM (34-47 KT)

SCS: SEVERE CYCLONIC STORM (48-63KT)

VSCS: VERY SEVERE CYCLONIC STORM (64-89 KT)

ESCS: EXTREMELY SEVERE CYCLONIC STORM (90-119 KT)

SuCS: SUPER CYCLONIC STORM (≥ 120 KT)

● LESS THAN 34 KT

◐ 34-47 KT

● ≥ 48 KT

— OBSERVED TRACK

— FORECAST TRACK

● CONE OF UNCERTAINTY

AREA OF MAXIMUM SUSTAINED WIND SPEED:

■ 28-33 KT (52-61 KMPH)

■ 34-49 KT (62-91 KMPH)

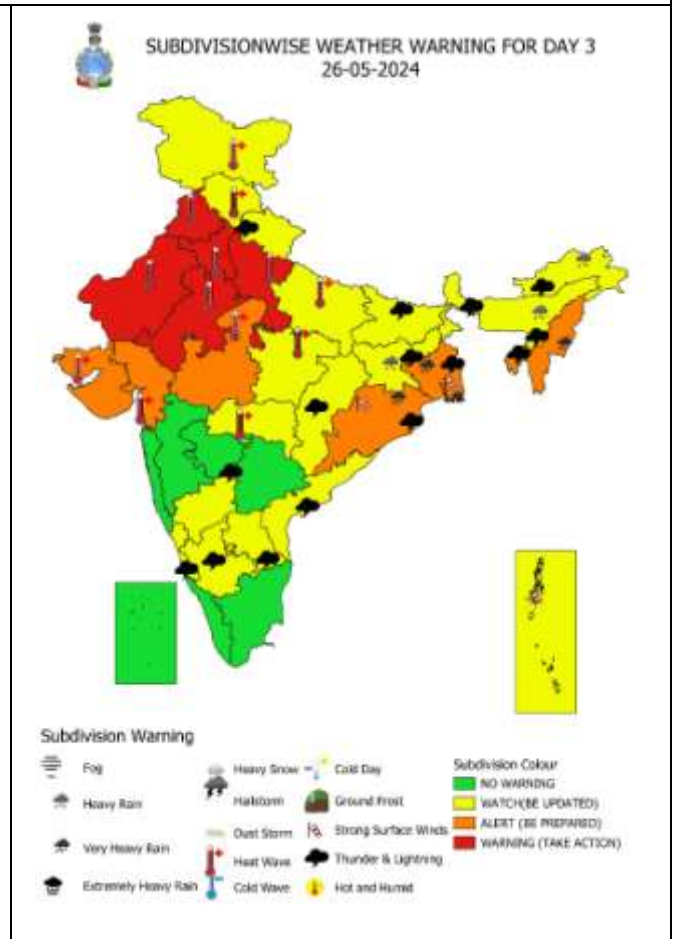
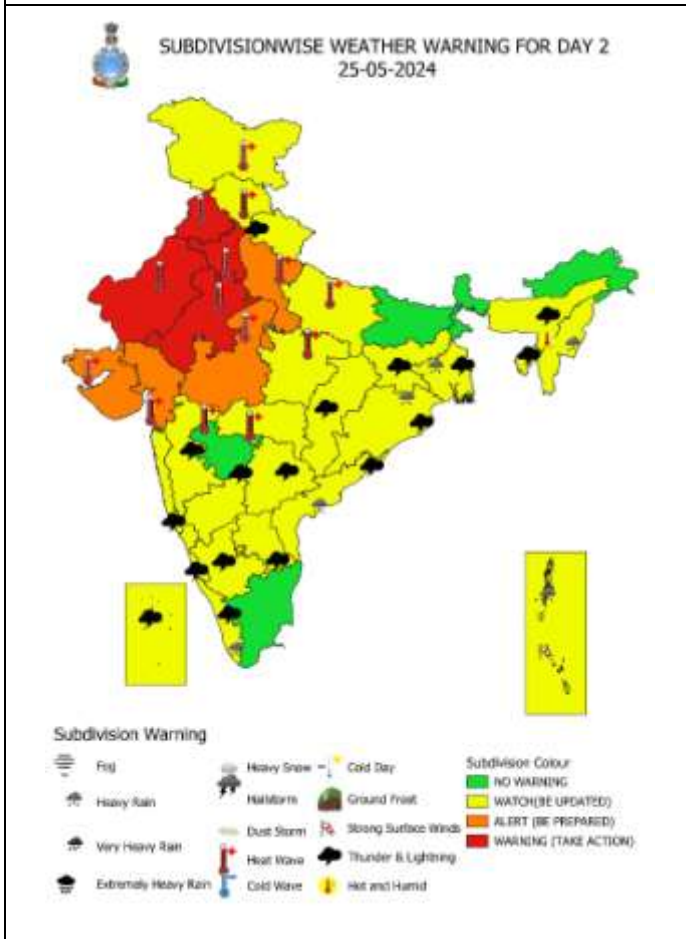
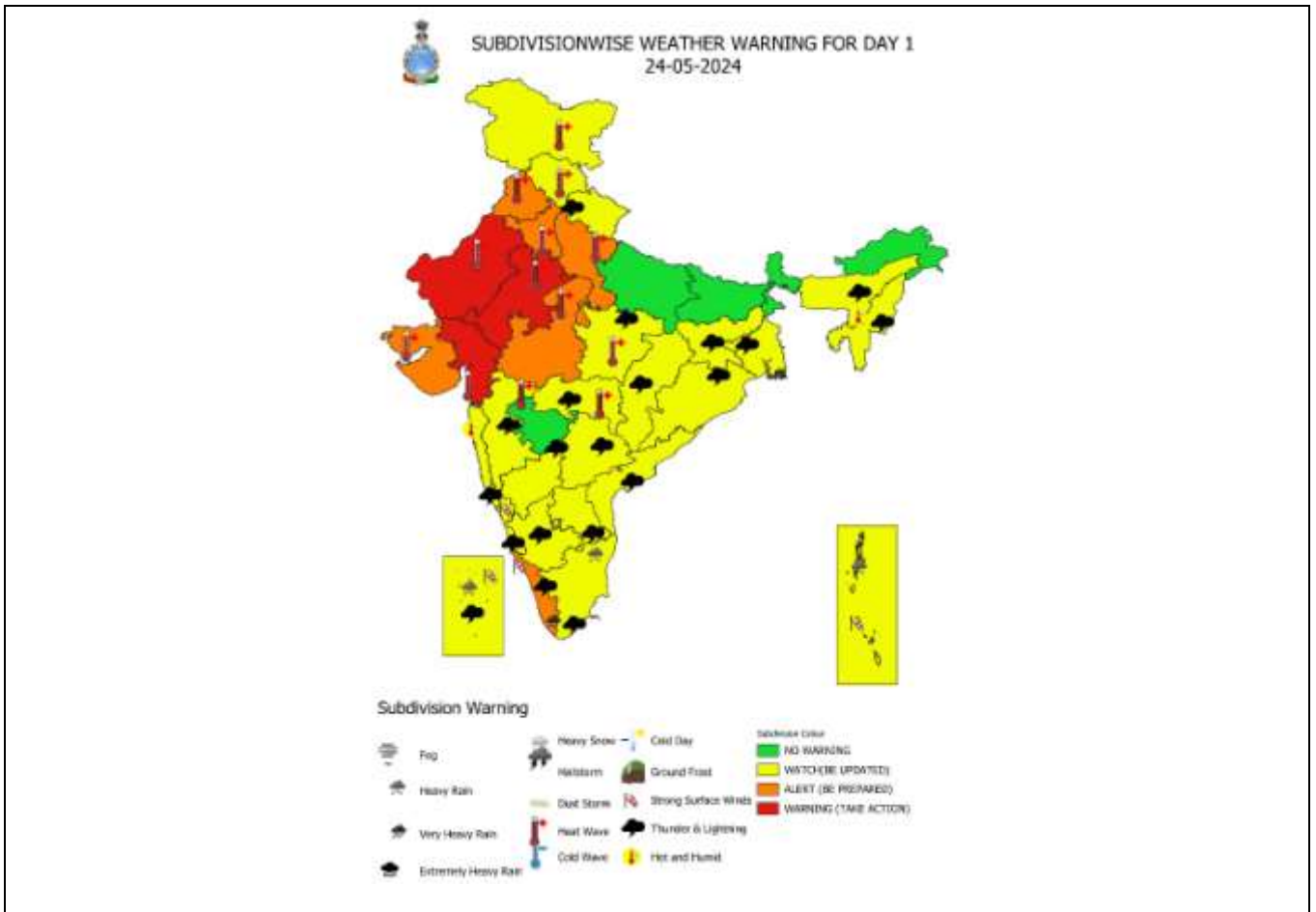
■ 50-63 KT (92-117 KMPH)

■ ≥ 64 KT (≥118 KMPH)

**IMPACT OVER THE SEA**

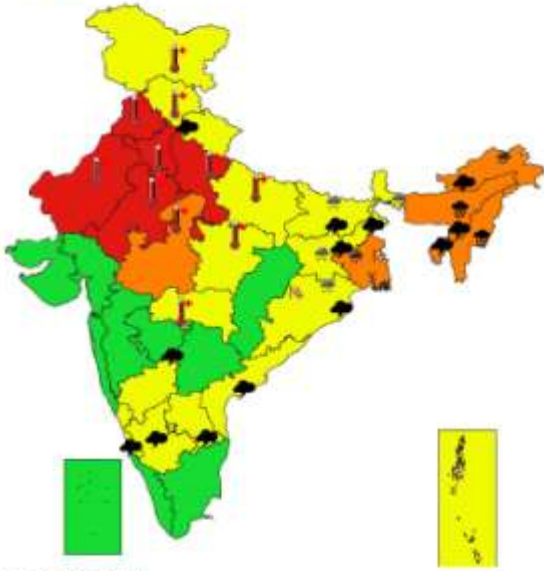
MSW (knot/kmph)	Impact	Action
28-33 (52-61)	Very rough seas	Total suspension of fishing operations
34-49 (62-91)	High to very high seas	Total suspension of fishing operations
50-63 (92-117)	Very high seas	Total suspension of fishing operations
≥ 64 (≥118)	Phenomenal	Total suspension of fishing operations

# Heavy Rainfall Warning Graphics





**SUBDIVISIONWISE WEATHER WARNING FOR DAY 4**  
27-05-2024

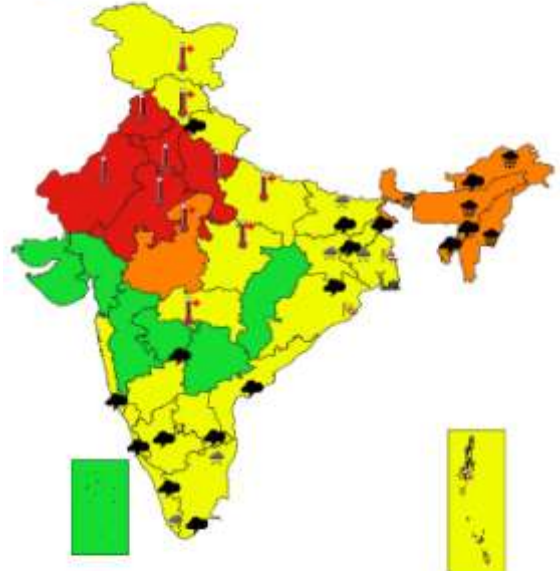


**Subdivision Warning**

- |                      |            |                      |   |
|----------------------|------------|----------------------|---|
| Fog                  | Heavy Snow | Cold Day             | <b>Subdivision Colour</b><br>NO WARNING<br>WATCH (BE UPDATED)<br>ALERT (BE PREPARED)<br>WARNING (TAKE ACTION) |
| Heavy Rain           | Hailstorm  | Ground Frost         |   |
| Very Heavy Rain      | Dust Storm | Strong Surface Winds |   |
| Extremely Heavy Rain | Heat Wave  | Thunder & Lightning  |   |
|                      | Cold Wave  | Hot and Humid        |   |



**SUBDIVISIONWISE WEATHER WARNING FOR DAY 5**  
28-05-2024



**Subdivision Warning**

- |                      |            |                      |   |
|----------------------|------------|----------------------|---|
| Fog                  | Heavy Snow | Cold Day             | <b>Subdivision Colour</b><br>NO WARNING<br>WATCH (BE UPDATED)<br>ALERT (BE PREPARED)<br>WARNING (TAKE ACTION) |
| Heavy Rain           | Hailstorm  | Ground Frost         |   |
| Very Heavy Rain      | Dust Storm | Strong Surface Winds |   |
| Extremely Heavy Rain | Heat Wave  | Thunder & Lightning  |   |
|                      | Cold Wave  | Hot and Humid        |   |

## Fishermen Warning Graphics

